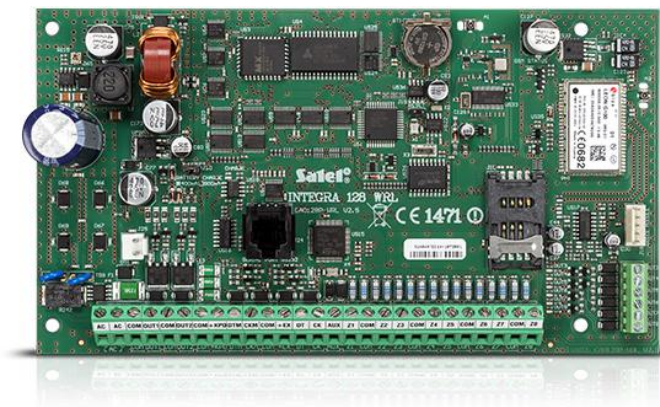


# INTEGRA 128-WRL

## ADVANCED CONTROL PANEL WITH ABAX WIRELESS TECHNOLOGY AND GSM/GPRS COMMUNICATOR

Advanced alarm control unit for implementation of alarm systems with the home automation functionality. In comparison with the basic **INTEGRA** models, the **INTEGRA 128-WRL** control unit is distinguished by its integrated GSM/GPRS communication unit and the **ABAX** wireless interface. A perfect option for systems where unobstructed wireless communication and advanced functionality is a priority.

- 8 up to 128 wireless and hardwired zones
- built-in bidirectional **ABAX** wireless interface
- 32 partitions, 8 objects
- 8 up to 128 programmable outputs
- keypads and expansion modules buses
- built-in GSM/GPRS communicator with monitoring, voice and text messaging, and remote control features
- access control and home automation features
- system operation with touchscreen keypads, LCD keypads, partition keypads, keyfobs and proximity cards or remotely with mobile phone or PC
- 64 independent timers for automatic control
- event log with 21,503 entries and event printing feature
- 240+8+1 users
- RS-232 port – RJ type socket
- flash firmware upgrade with a PC
- built-in 2A switching mode backup power supply with battery charging and diagnostic features
- compatibility with **INTEGRA**, **ABAX** and **ABAX 2** (firmware version – min. 1.19, firmware version of the processor supporting the ABAX system – min. 3.10) and accessories and modules
- option of not reporting possible problems with connecting to the SATEL server as a failure



### TECHNICAL DATA

Environmental class	II
Max. battery capacity	24 Ah
Control panels	13,7 V DC
Low current programmable outputs rating	50 mA
High current programmable outputs rating	2000 mA
Power supply rating	2 A
Board dimensions	192 x 106 mm
Operating temperature range	-10...+55 °C
Main board supply voltage (±15%)	18 V AC, 50-60 Hz
50131-3 grade	Grade 2



The actual appearance of the products may differ from the presented images. Product descriptions are provided in the web service for information purposes only.